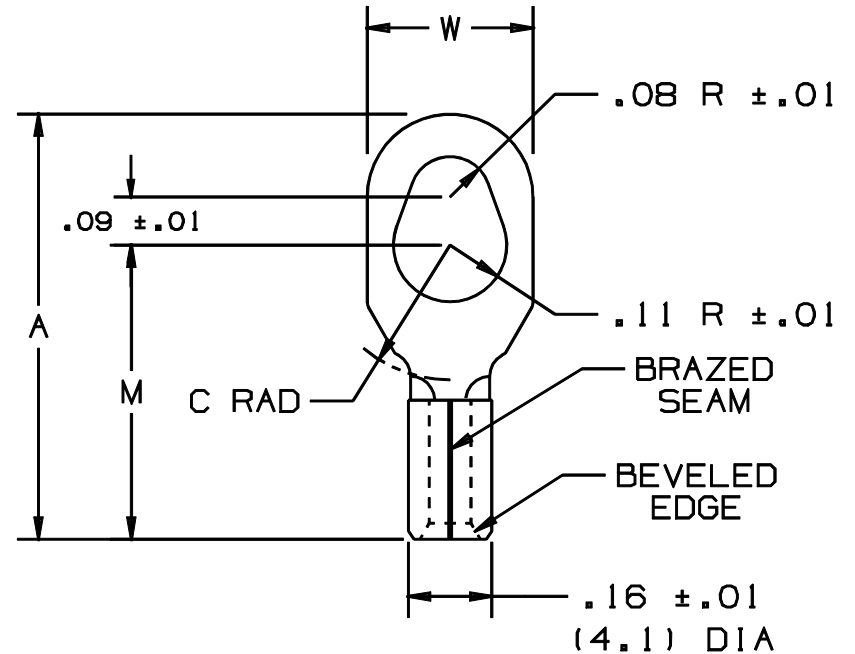


THIS COPY IS PROVIDED ON A RESTRICTED BASIS AND IS NOT TO BE USED IN ANY WAY DETRIMENTAL TO THE INTERESTS OF PANDUIT CORP.

PANDUIT PART NUMBER		STUD SIZE	DIMENSIONS in.			
PREFIX	PK		A $\pm .02$ (.5)	W $\pm .01$ (.3)	C $\pm .02$ (.4)	M $\pm .02$ (.5)
P14-610R	-C -M	#6, #8, #10	.80 (20.3)	.31 (7.9)	.25 (6.3)	.55 (14.0)



NOTES:

- UL LISTED AND CSA CERTIFIED FOR:
 - #18-14 AWG SOLID OR STRANDED, COPPER WIRE
 - 302°F (150°C) MAX TEMP RATING
- PACKAGE QUANTITY:
 - STD: C=100
 - BULK: M=1000
- MATERIAL:
 - STAMPING: .032 (.81) THK COPPER, TIN PLATED
- WIRE STRIP LENGTH: $9/32 \begin{smallmatrix} +1/32 \\ -0 \end{smallmatrix}$ ($7.1 \begin{smallmatrix} +.8 \\ -0 \end{smallmatrix}$)
- DIMENSIONS IN BRACKETS ARE IN MILLIMETERS
- INSTALLATION TOOLS:
 - UL LISTED AND CSA CERTIFIED WITH: CT-100, CT-200, CT-570, CT-1570
 - PANDUIT APPROVED: CT-160, CT-260



LISTED
587H
E52164



CERTIFIED
LR31212

A41473_04

04	1/01	KMD		CAD FILE SPEC. WAS N41473AA_PCD_03				<p>PANDUIT CORP. TINLEY PARK, ILLINOIS</p> <p>#16-14 BARREL, NON-INSULATED MULTI-STUD TERMINAL</p>
03		JKD		ADDED CT-1570 TOOL	07632			
02	4/96	JKD	RS	ADDED DIMS, REVISED NOTES	04299	LA	DBH	
01	2/92	BK	RS	UPDATED AGENCY APPROVAL STATUS		LA	KS	
REV	DATE	BY	CHK	DESCRIPTION	ECN	CUST	PM	DRAWN BY: DRL CDR'D: FES SCALE: NONE DRAWING NO.: A41473